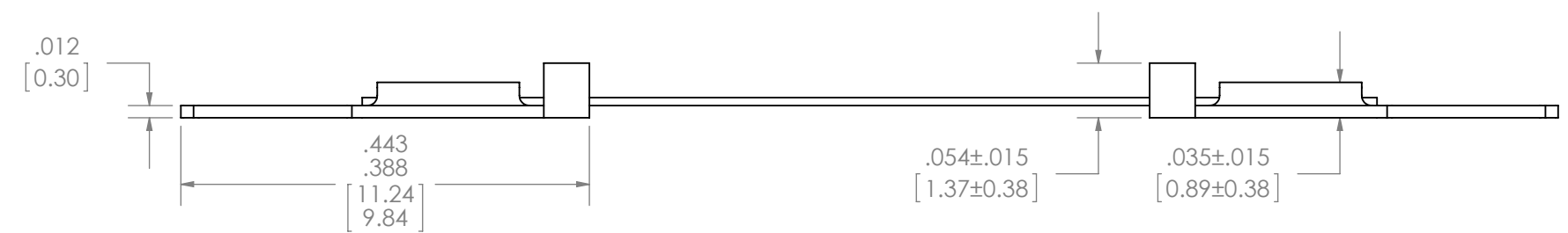
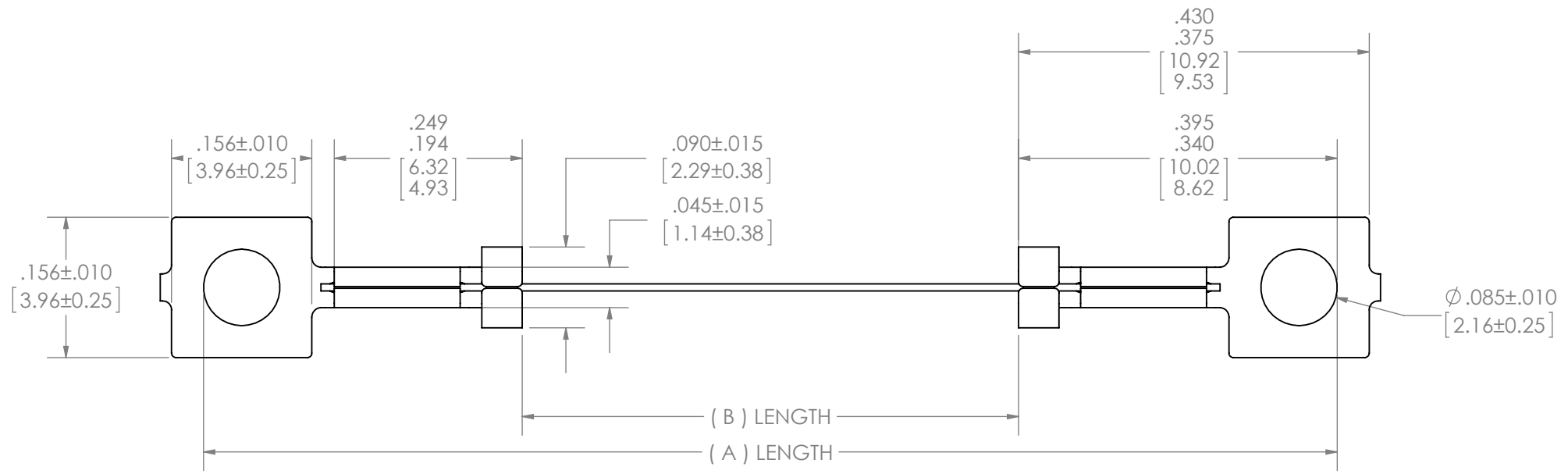
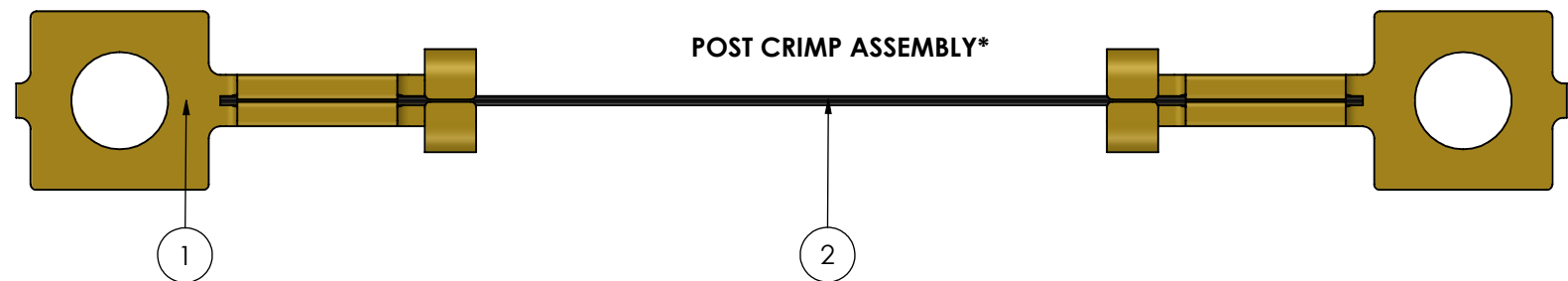


BOM Table			
ITEM NO.	PART NUMBER	DESCRIPTION	QTY.
1	705	RING TERMINAL	2
2	N/A	FLEXINOL® ACTUATOR WIRE	1



REFERENCE ONLY  
 \*MAY CHANGE SLIGHTLY WITH DIFFERENT WIRE DIAMETERS DOES NOT INCLUDE MINIMAL FLASH/DEFORMATIONS THAT ARE CREATED DURING CRIMPING.

UNLESS OTHERWISE SPECIFIED DIMENSIONS ARE IN INCHES [MM] .X = ± .1 .XX = ± .01 .XXX = ± .005 .XXXX = ± .0005 ANGLES = ± 1°	THIRD ANGLE PROJECTION	SCALE	<b>DYNALLOY, Inc.</b> PART NAME <b>705 RING TERMINAL: CRIMPED ASSEMBLY</b> DWG. NO. <b>DI4955_705RevB</b> PART NO. <b>705</b>
		6:1	
MATERIAL		GD&T PER ASME Y14.5M-1994	
<b>BRASS</b>			
NOTICE OF CONFIDENTIAL INFORMATION <small>THIS DRAWING AND THE SUBJECT MATTER CONTAINED HEREIN ARE THE PROPERTY OF DYNALLOY INCORPORATED AND MAY NOT BE COPIED, REPRODUCED OR DISCLOSED TO OTHERS WITHOUT THE EXPRESS WRITTEN PERMISSION OF A DULY AUTHORIZED AGENT OF THE COMPANY. THIS DRAWING IS SUBJECT TO RECALL BY DYNALLOY INCORPORATED AT ANY TIME.</small>			SIZE <b>B</b>
			SHEET <b>1 OF 1</b>